

NOTES:

① FOR UNITS BUILT PRIOR TO 09/08/2011, USE ②60 FOR REAR COVER KIT.

② HEART RATE WIRE HARNESS IS NOT FIELD REPLACEABLE, ORDER ③7.

EFX 5.25 - 10/EFX 5.25 - 11

P/N : 300798-102

SUBREV : F

DRAWN BY : KAW

DATE : 9.6.12

SHEET 1 OF 4

D

C

B

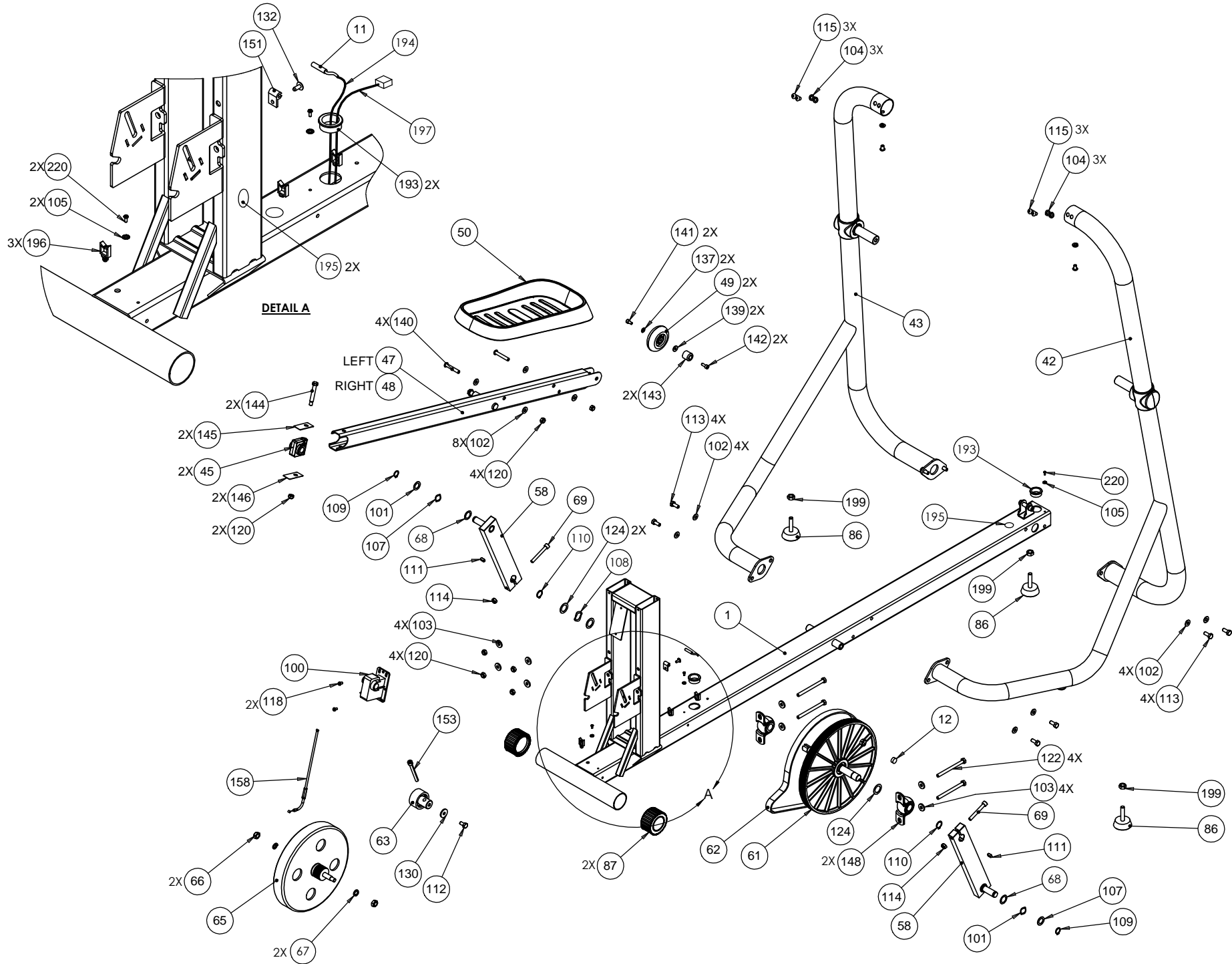
A

4

3

2

1

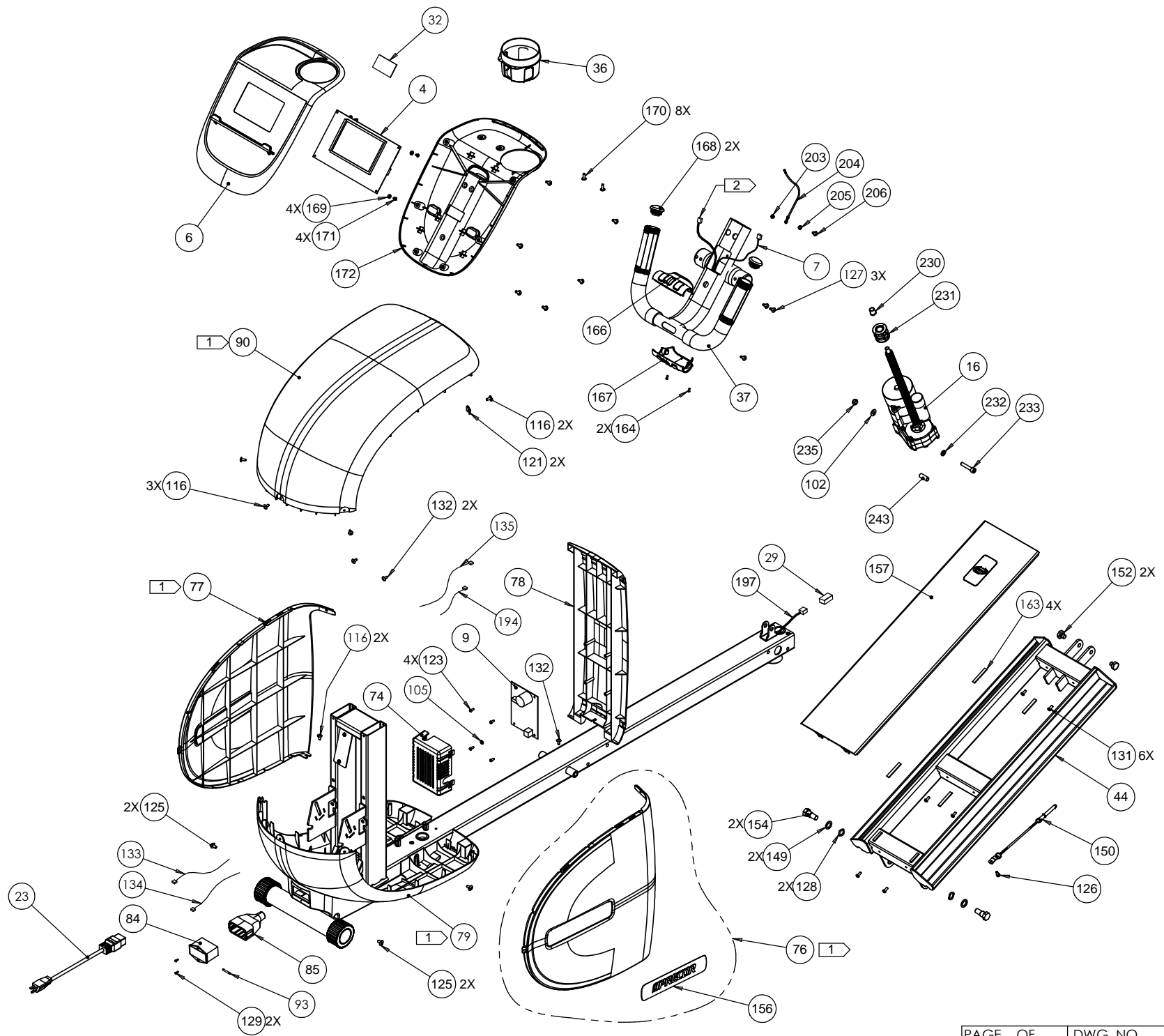


4

3

2

1



D

C

B

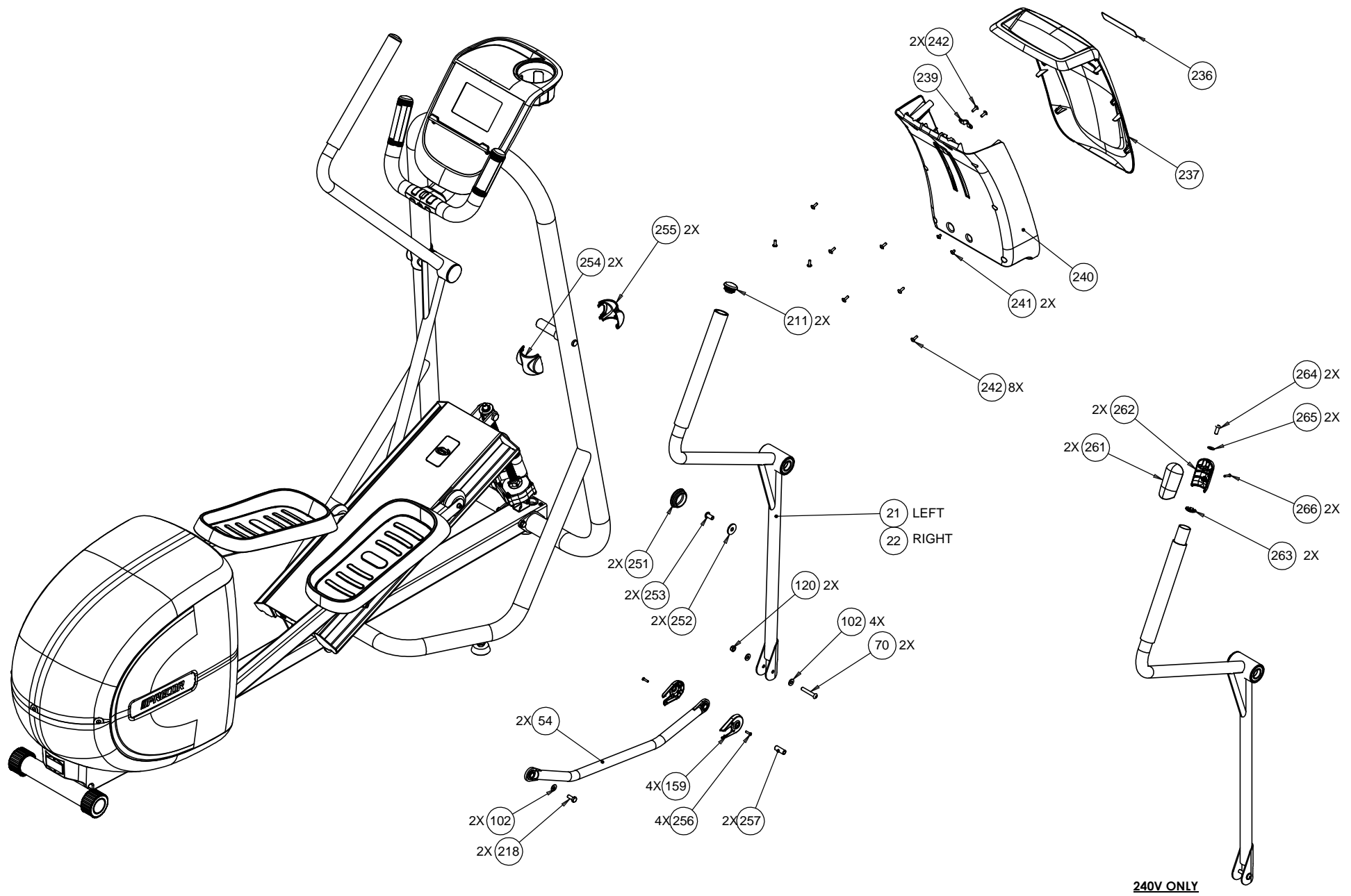
A

4

3

2

1



240V ONLY

Bubble#	OEM Number	Description
4	PPP000000RX3LVL000	ASSY,UPCA & SW,5.25-15,(REXON P/N 1
6	PPP000000RX3L6B000	ASSY,DISPLAY,FRONT PANEL,5.25-15(RE
11	PPP000000RX31FW000	REED SWITCH(REXON P/N 10H131FW)
12	PPP000000RX01H5000	MAGNET
23	PPP000000RX2NJK000	PWR CORD,250VAC,10A,2.8M (REXON P/N
29	PPP000000RX2S9Y000	
32	PPP000000RX31VH000	ASSY,PCA, HEART RATE
36	PPP000000RX3L4X000	WATER BOTTLE HOLDER (REXON P/N 10E9
44	PPP000000RX3T96000	RAMP ASS'Y(REXON P/N 10H13T96)
45	PPP000000RX2WYA000	SHAFT SLEEVE ASS'Y
47	PPP000000RX3FZK000	PEDAL TUBE ASS'Y-L(REXON P/N 10K23F
48	PPP000000RX3FZJ000	PEDAL TUBE ASS'Y-R(REXON P/N 10K23F
49	PPP000000RX30VL000	ROLLING WHEEL ASS'Y(REXON P/N 10H13
50	PPP000000RX3FZT000	PEDAL(REXON P/N 10K23FZT)
54	PPP000000RX3G27000	LINKGE ASS'Y(REXON P/N 10K23G27)
58	PPP000000RX30V6000	CRANK ASS'Y(REXON P/N 10H130V6)
61	PPP000000RX30VK000	PULLEY ASS'Y(REXON P/N 10H130VK)
62	PPP000000RX2JTH000	DRIVE BELT, POLY-V BELT
63	PPP000000RX30VJ000	IDLER WHEEL ASS'Y(REXON P/N 10H130V
65	PPP000000RX31GW000	MAGNETIC BRAKE ASS'Y(REXON P/N 10H1
66	PPP000000RX21BB000	NUT
67	PPP000000RX0J9D000	SPRING WASHER(REXON P/N 2502AZC416)
68	PPP000000RX0J5W000	FLAT WASHER(REXON P/N 2501MNN340)
69	PPP000000RX32GH000	HEX. SOC. HD. CAP BOLT(REXON P/N 26
70	PPP000000RX34FW000	HEX. SOC. TRUSS HD. SCREW(REXON P/N
71	PPP000000RX3FZS000	BEARING COVER(REXON P/N 10K23FZS)
86	PPP000000RX26LH000	LEVELING PAD(REXON P/N 10B826LH)
100	PPP000000RX01HL000	D.C MOTOR ASS'Y(REXON P/N 1A503003A
101	PPP000000RX0J52000	FLAT WASHER(REXON P/N 2501MBDN47)
102	PPP000000RX0J5G000	FLAT WASHER,8 X 18 X 1.5, STEEL, E-
103	PPP000000RX0J7B000	FLAT WASHER(REXON P/N 2501NBDN22)

Bubble#	OEM Number	Description
104	PPP000000RX0J94000	SPRING WASHER(REXON P/N 2502ABC416)
107	PPP000000RX0JB4000	WAVE WASHER(REXON P/N 2506MBN616)
109	PPP000000RX0JED000	C-RING(REXON P/N 2570BBN116)
110	PPP000000RX0JFP000	C-RING(REXON P/N 2570HBN120)
111	PPP000000RX0JGD000	PARALLEL KEY(REXON P/N 2571MNC319)
112	PPP000000RX0JP4000	HEX. HD. BOLT(REXON P/N 2601BBDAA9)
113	PPP000000RX0JRA000	HEX. HD. BOLT(REXON P/N 2601BZDA55)
114	PPP000000RX0KQZ000	NUT(REXON P/N 2705FBD110)
115	PPP000000RX3HFT000	HEX. SOC. TRUSS HD. SCREW(REXON P/N
117	PPP000000RX0KR4000	LOCK NUT(REXON P/N 2705FZD108)
118	PPP000000RX0KAE000	CR.RE. PAN HD. TAPPING SCREW
120	PPP000000RX0KQY000	LOCK NUT
122	PPP000000RX0WRG000	HEX. HD. BOLT
124	PPP000000RX1568000	FLAT WASHER
126	PPP000000RX22XT000	HEX.SOCKET HD.CAP SCREWS
130	PPP000000RX2JS2000	FLAT WASHER
131	PPP000000RX0KCX000	PAN HD PLAIN WASHER SELF TAPPING SC
132	PPP000000RX2PHA000	CR. RE. TRUSS HD. TAPPING SCREW
137	PPP000000RX0J4E000	FLAT WASHER
139	PPP000000RX0J74000	FLAT WASHER
140	PPP000000RX21RE000	HEX. SOC. TRUSS HD. SCREW
141	PPP000000RX2NAN000	HEX. SOC. HD. CAP BOLT
142	PPP000000RX2RYF000	HEX. SOC. HD. CAP BOLT
143	PPP000000RX3TWY000	ANCHOR BLOCK(REXON P/N 10H13TWY)
144	PPP000000RX2SEW000	SPECIAL BOLT(REXON P/N 10E92SEW)
145	PPP000000RX2UVP000	BUMPER
146	PPP000000RX2UVQ000	BUMPER
150	PPP000000RX2SQ0000	LATCH(REXON P/N 10E92SQ0)
151	PPP000000RX2UJ3000	REED SWITCH BRACKET(REXON P/N 10F62
152	PPP000000RX2ULS000	CLAMP BOLT

Bubble#	OEM Number	Description
153	PPP000000RX2YQ3000	HEX. SOC. HD. CAP BOLT(REXON P/N 26
154	PPP000000RX30WG000	SPECIAL BOLT(REXON P/N 10H130WG)
157	PPP000000RX3FZR000	RACK BLADE GUARD(REXON P/N 10K23FZR
158	PPP000000RX31FU000	BRAKE LEADWIRE(REXON P/N 10H131FU)
163	PPP000000RX32EF000	FOAM(REXON P/N 10H132EF)
164	PPP000000RX2NTM000	CR.RE. PAN HD. TAPPING SCREW
166	PPP000000RX2SG1000	CONSOLE MAST COVER
167	PPP000000RX2SG2000	CONSOLE MAST COVER
168	PPP000000RX2SJV000	END CAP(REXON P/N 10E92SJV)
169	PPP000000RX0J66000	FLAT WASHER
170	PPP000000RX0K94000	CR. RE. TRUSS HD. TAPPING SCREW(REX
171	PPP000000RX0KAK000	CR.RE. PAN HD. TAPPING SCREW
172	PPP000000RX3L4Z000	PLASTIC,CONSOLE,BOTTOM,TWILIGHT ZON
193	PPP000000RX21BF000	STRAIN RELIEF
194	PPP000000RX2R2W000	ASSY,CBL,COUPLER-UPCA
195	PPP000000RX2RJP000	EARTH LABEL(REXON P/N 10E92RJP)
196	PPP000000RX2SDE000	CORD CLAMP
197	PPP000000RX2QX5000	
199	PPP000000RX0KNM000	HEX. NUT
203	PPP000000RX0KND000	HEX NUT
204	PPP000000RX2872000	CBL,1C,18AWG,#10 RING/187X032 QD RE
205	PPP000000RX0JAF000	EXTERNAL TOOTH LOCK WASHER(REXON P/
206	PPP000000RX0K4R000	CR RE TRUSS HD SCREW
212	PPP000000RX2RPU000	NEUTRAL LABEL(REXON P/N 10E92RPU)
214	PPP000000RX0JEE000	C-RING
218	PPP000000RX2T03000	HEX. HD. BOLT(REXON P/N 26012T03)
220	PPP000000RX0KBP000	CR.RE. PAN HD. TAPPING SCREW
233	PPP000000RX0JUJ000	HEX. SOC. HD. CAP BOLT(REXON P/N 26
243	PPP000000RX2SF3000	SLEEVE(REXON P/N 10E92SF3)
250	PPP000000012223250	FUSE, TIME-DELAY,2.5A,250V,5X20MM

Bubble#	OEM Number	Description
251	PPP000000RX3FZW000	END CAP(REXON P/N 10K23FZW)
253	PPP000000RX2N7U000	HEX. SOC. TRUSS HD. SCREW
254	PPP000000RX3FZV000	END CAPS(REXON P/N 10K23FZV)
255	PPP000000RX3FZU000	END CAPS(REXON P/N 10K23FZU)
256	PPP000000RX32FF000	CR. RE. PAN HD. TAPPING SCREW
257	PPP000000RX2RBU000	LINK SHAFT(REXON P/N 10E92RBU)
261	PPP000000RX35C5000	END CAP,MOVING HANDLE BAR, TOP
262	PPP000000RX35C6000	END CAP,BOTTOM,MOVING HANDLE BAR
263	PPP000000RX35J2000	NUT,STAR,DOUBLE,M8X1.25
264	PPP000000RX0K05000	HEX. SOC. TRUSS HD. MACHINE SCREW,
265	PPP000000RX0J5G000	FLAT WASHER,8 X 18 X 1.5, STEEL, E-
266	PPP000000RXCK23000	SCREW,SELF TAPPING,PHILLIPS,M4 X 18
999	PPP000000301687201	LITERATURE KIT, EFX 5.25 (3-3015) R